

# AVE MARIA CHAPEL

## AT DOMINO'S FARMS

### NEW SCHOLARSHIPS

- Ave Maria University
  - Ave Maria School of Law
- Information in This Issue

DECEMBER 2015  
- JANUARY 2016

# BULLETIN

## Fall Scholarship Fest Successful, Despite Weather

On Saturday, November 21, students considering attending Ave Maria University (AMU) and Ave Maria School of Law (AMSL), plus their parents, braved the unseasonably snowy roads on their trek to Domino's Farms for the 2015 Ave Scholarship Fall Fest to hear about two very generous scholarships being offered to Michigan students.

The Ann Arbor area had been hit by a snowstorm which dumped close to a foot of snow throughout the day. However, this did not dampen the spirits of those who made it. The attendees enjoyed games, raffle prizes, and plenty of food.

The highlight of the evening was a program featuring AMU and AMSL founder, Tom Monaghan, along with AMU alum-

na and Admissions Counselor Cassie Kreiger, AMSL alumna Kate Oliveri, and AMSL Director of Admissions Claire O'Keefe.

Kreiger, who graduated from AMU in 2014, talked about how grateful she was for receiving an AMU education and what a life-changing experience it was to spend four years studying there. She smiled as she talked about the fact that her younger brother is now a freshman at "Ave" and how impactful the experience has already been on him. Oliveri, who

graduated from AMSL just this past spring, now works as an attorney  
*(Continued on Page 2...)*



*Thomas More Law Center Attorney Kate Oliveri, an AMSL alumna, speaking at the Fall Fest event.*



AN OUTREACH TO THE ANN ARBOR / YPSILANTI COMMUNITY FROM  
**AVE MARIA UNIVERSITY**

Fest (...Continued from Page 1)

here in the building at the Thomas More Law Center. She shared not only about the first-class legal education she received at the law school, but also about the great Catholic, family-like environment that exists on AMSL's campus.

Admissions representatives from both schools also shared with attendees the details of the two very generous scholarships which are available to those from Michigan (details of which are at right).

The roots of both schools are deep here in Michigan and specifically at Domino's Farms. Monaghan founded both schools, and was able to fund their rapid growth largely through the assets available from his sale of Domino's Pizza back in 1998. Now, in conjunction with other area donors, Monaghan and The Ave Maria Foundation are working to send students from Michigan to both AMU and AMSL.

## Incredible Scholarships for Michigan Students

For Catholic students interested in attending AMU, there is a \$28,000 scholarship (over four years) available to qualified students. The particularly exciting thing is that it is an add-on scholarship which means that it is in addition to all other institutional scholarships and federal aid. So, depending on what other aid a student qualifies for, their whole package could amount to nearly a full tuition scholarship!

To qualify for the Michigan Scholarship, a student must be a Catholic who is enrolling as a freshman at AMU in the fall of 2016. \$3,500 is awarded each semester for up to four years as long as the minimum academic requirements continue to be met.

Interested students should not delay in applying, as the Michigan Scholar-

ship is currently being limited to the first 30 applicants who are accepted.

To view the full details and requirements for the scholarship, visit [www.avemaria.edu](http://www.avemaria.edu) and navigate to the Scholarships page in the Future Students section.

For those interested in law school, the AMSL Michigan (and Toledo Area) Full Tuition Scholarship is an incredible opportunity for mission-oriented students from Michigan or the Toledo area to receive a first-rate Catholic legal education! This scholarship is for



## \$28,000 AMU Scholarships Available to Michigan Catholic Homeschoolers

Ave Maria University is a place where homeschooled students don't just survive, they thrive! AMU builds on the values that parents have instilled at home, instead of tearing them down.

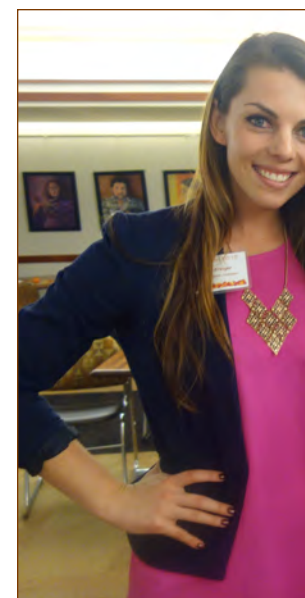
The Michigan Homeschooled Faith Scholarship is being offered to first-time college freshmen beginning in Fall 2016. This assistance is available thanks to the generosity of a donor who wants to applaud the efforts of Catholic Homeschooling families throughout Michigan and believes that students who have been homeschooled in committed Catholic families will thrive at AMU.

The scholarship mirrors the Michigan Schol-

arship described above, but is being offered to homeschooled students beyond the 30-student maximum of the Michigan Scholarship (note: one student cannot receive both).

To qualify, a student must have been homeschooled for four of the last six years, either independently or enrolled in a national homeschool program, such as Kolbe Academy, Mother of Divine Grace, or Seton Home Study. An applicant must reside in Michigan and be a practicing Catholic with a letter of endorsement from a priest or parish office. Details and requirements can be viewed online at: [www.avemaria.edu](http://www.avemaria.edu) (navigate to the Scholarships page in the Future Students section).

Photos — (above) Tom John Michael, Sr. Pio Mary, Mother of the E Admissions Counselor C Yukus and his mother, Ly





new students enrolling at AMSL for the summer or fall of 2016 who live or study in Michigan or Toledo and meet the academic requirements.

In addition to full tuition, there are generous first-year stipends available up to \$10,000 based on LSAT scores. To view details and requirements, visit [www.avemarialaw.edu](http://www.avemarialaw.edu) and click on the Scholarships page in the Admissions & Financial Aid section.

*Monaghan with Sr. Marie Bernadette, Sr. Maria, and Sr. Mary Lawrence of the Sisters of Charity at the Fall Fest; and (below) AMU classie Kreiger with prospective student John Yokus, at the Fall Fest.*



## 30-Year Anniversary Noted with Celebration at Domino's Farms Office Park

On December 9, 2015 Domino's Farms celebrated its 30th anniversary. Yes, this Class-A office park which spans 6/10 of a mile has been around for three decades and has become not just a local landmark, but also a regional and national one—especially in regards to its utilization of Frank Lloyd Wright Prairie Style architecture.

The office park, which is comprised of almost one million square feet, is a labor of love for owner Tom Monaghan. He and the staff members who care for the facility take great pride in the upkeep of the structure and its surroundings, but strive constantly to improve it for those who work and visit here.

If one is to walk the halls (which there are miles of) or drive around the building, it is evident that Domino's Farms is anything but just another office park. Whether it is the stunning collection of Frank Lloyd Wright artifacts and models on the level-one main corridor (affectionately known as Main Street) or the 1984 World Series Trophy that is on display just past the EBA Café, there is much to behold.

One of the most recent upgrades to the office park was installation of new carpeting throughout the main hall-

way. When replacing the old carpet, great care was taken to brighten the space and incorporate the office park's bison logo into the design. Speaking of the bison logo, you may have noticed new red bike racks outside the various lobbies in the shape of bison. (Yes, those really are bike racks—see photo above.)

When the chapel was originally conceived, it was to make Mass attendance convenient for those who worked in the building. As time went on, the number of outside Mass attendees increased, as did the number of Masses offered each day. We are very grateful for the fervor and devotion of all who attend Mass at the chapel. We do ask that chapel visitors remember our corporate environment and be diligent in preserving this atmosphere.

It's especially important to be mindful that we have many medical patients entering Lobby C (by the chapel) who have never been here before. As you avail yourself of the chapel (and take advantage of the many amenities in the building), we ask you to be sensitive to those who work here or who are patients visiting one of the many medical clinics located here.

Happy 30th, Domino's Farms!

# CHAPEL SCHEDULE

## Holidays

Mon., Dec. 21

MASS: 8:00 a.m., 10:00 a.m.  
Noon & 5:00 p.m.

Tues., Dec. 22

MASS: 8:00 a.m., 10:00 a.m.  
Noon & 5:00 p.m.

Wed., Dec. 23

MASS: 8:00 a.m., 10:00 a.m.  
Noon & 5:00 p.m.

Thurs., Dec. 24 — Christmas Eve

MASS: 8:00 a.m. & 9:30 a.m.

Fri., Dec. 25 — Christmas Day

NO MASS OR DEVOTIONS  
(Domino's Farms Closed)

Sat., Dec. 26

MASS: 8:00 a.m. & 9:30 a.m.

Mon., Dec. 28

MASS: 8:00 a.m., Noon & 5:00 p.m.

Tues., Dec. 29

MASS: 8:00 a.m., Noon & 5:00 p.m.

Wed., Dec. 30

MASS: 8:00 a.m., Noon & 5:00 p.m.

Thurs., Dec. 31 — New Year's Eve

MASS: 8:00 a.m. & 9:30 a.m.

Fri., Jan. 1 — New Year's Day

NO MASS OR DEVOTIONS  
(Domino's Farms Closed)

Sat., Jan. 2

MASS: 8:00 a.m. & 9:30 a.m.

## Regular

### MASS:

Mon.- Fri. 8:00 & 10:00 a.m., Noon, 5:00 p.m.

Sat. 8:00 a.m., 9:30 a.m.

Tues. 7:00 a.m., Men's Communion Service  
followed by breakfast & presentation

### CONFESSION:

Mon.- Fri. 8:30 a.m., 10:30 a.m., 5:30 p.m.

Sat. 8:30 a.m., 10:00 a.m.

(Confession also available by request  
on weekdays before Noon Mass)

### DEVOTIONS:

• Morning and Evening Prayer:

Mon.- Fri. 8:30 a.m., 4:45 p.m.

• Adoration: Sat. 8:30 - 9:30 a.m.

• Stations of the Cross: Fri. 12:30 p.m.

# Chapel Collections Update

• Year to Date: \$57,510.00

## Your Support Vital to Chapel Operations

As we begin this Jubilee Year of Mercy declared by the Holy Father, we also look back over the past year with gratitude for the many graces we have received. We are very grateful for all those who have generously given of their time and financial resources to support the chapel here at Domino's Farms. We especially want to recognize the extraordinary work of the dedicated volunteer sacristans who serve both Priests and attendees by taking care of the many practical needs on a daily basis. Thank you!

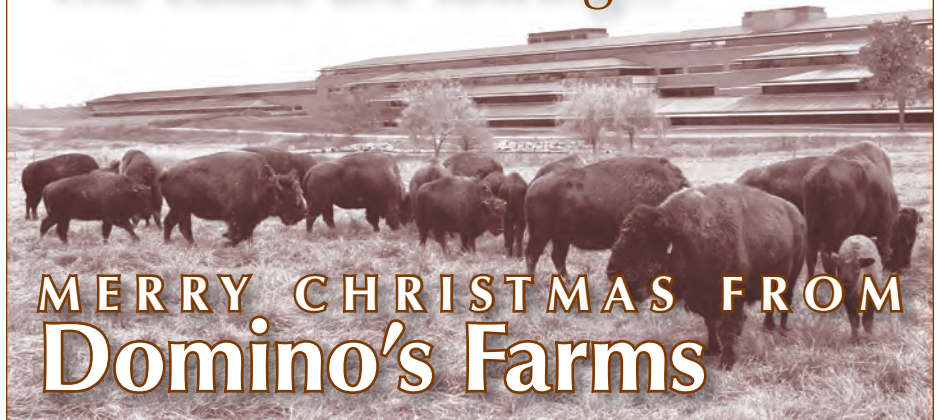
We often talk about how busy our lives are and how many things compete for our time. When people visit Domino's Farms and learn that we have four Masses a day, they often marvel at how blessed we are! Indeed, how easy it is to take for granted our chapel here which makes the Sacraments so readily available to us. How many places are you aware of that have Mass

and confession so frequently?

It costs approximately \$145,000 to provide our 22 Masses per week and many hours of confessions. Please know that we are very grateful for every donation we receive. We want to share with you that year to date (through November 30) we have received \$57,510 in donations to the chapel, which does not equate to even half of our annual operating cost, meaning we face a 2015 deficit of close to \$90,000.

We know that there are many worthwhile causes and that not everyone can afford to give large amounts. However, we do ask that if you are blessed by the Sacraments made available to you through the chapel, you would prayerfully consider financially supporting it now and on a regular basis. All contributions are tax-deductible and go directly to the upkeep of the chapel. Thank you for your support and your prayers.

## The cattle are lowing...



# MERRY CHRISTMAS FROM Domino's Farms